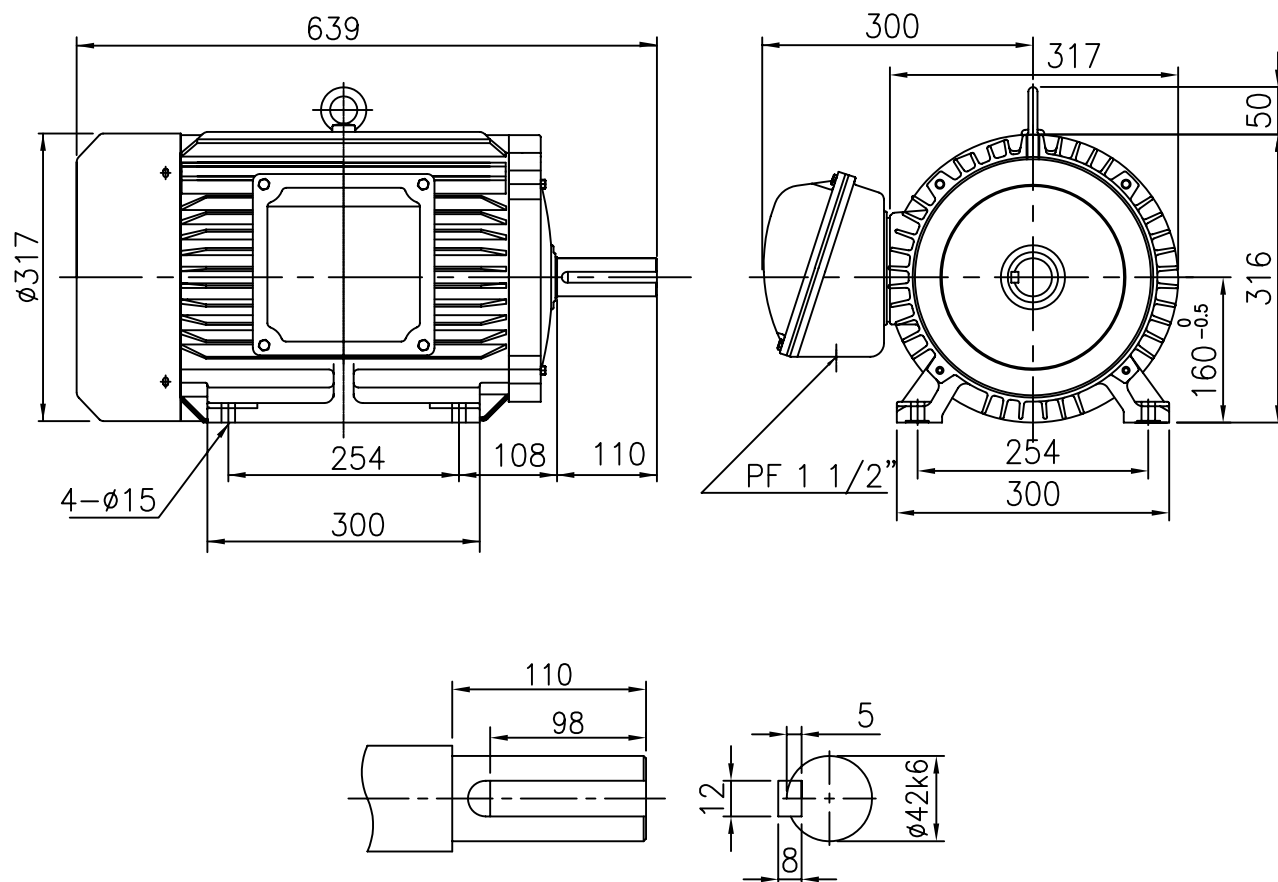


OUTLINE DIMENSION



SHAFT EXTENSION

<NOTE>

1. TYPE : TEFC(Totally Enclosed Fan Cooled)
FOOT MOUNTED TYPE
2. THE TOLERANCE FOR THE KEY DIMENSIONS
IS IN ACCORDANCE WITH KS B 1311-84
3. THE TERMINAL BOX MAY BE ROTATED
STEPS OF 90°

4. CAST IRON FRAME AND END BRACKETS.
5. STAINLESS STEEL NAME PLATE WITH
CONNECTION DIAGRAM.
6. STEEL FAN COVER AND CAST IRON
TERMINAL BOX

FRAME NO.	OUTPUT (kW)	POLE (P)	Hz	VOLTS (V)	INS. CLASS	PROTECTION	RATING	BEARING NO.		APPROX. WEIGHT (Kg)
								DRIVE	OPP.D.	
160L	11	6	50	415	F	IP54	CONT.	6309ZZ	6307ZZ	142

UNIT	mm	SCALE	$\frac{N}{S}$	PROJECT'N	3rd Angle	TITLE	OUTLINE
DESIGNED		CHECKED		APPROVED			
2008.12.18 Y.D. WON		2008.12.18 K.I. HA		2008.12.18 H.T. KIM		SUBJECT	160L, B3
HIGEN Motor co., Ltd.						DWG. NO.	DW-I15HE8GH