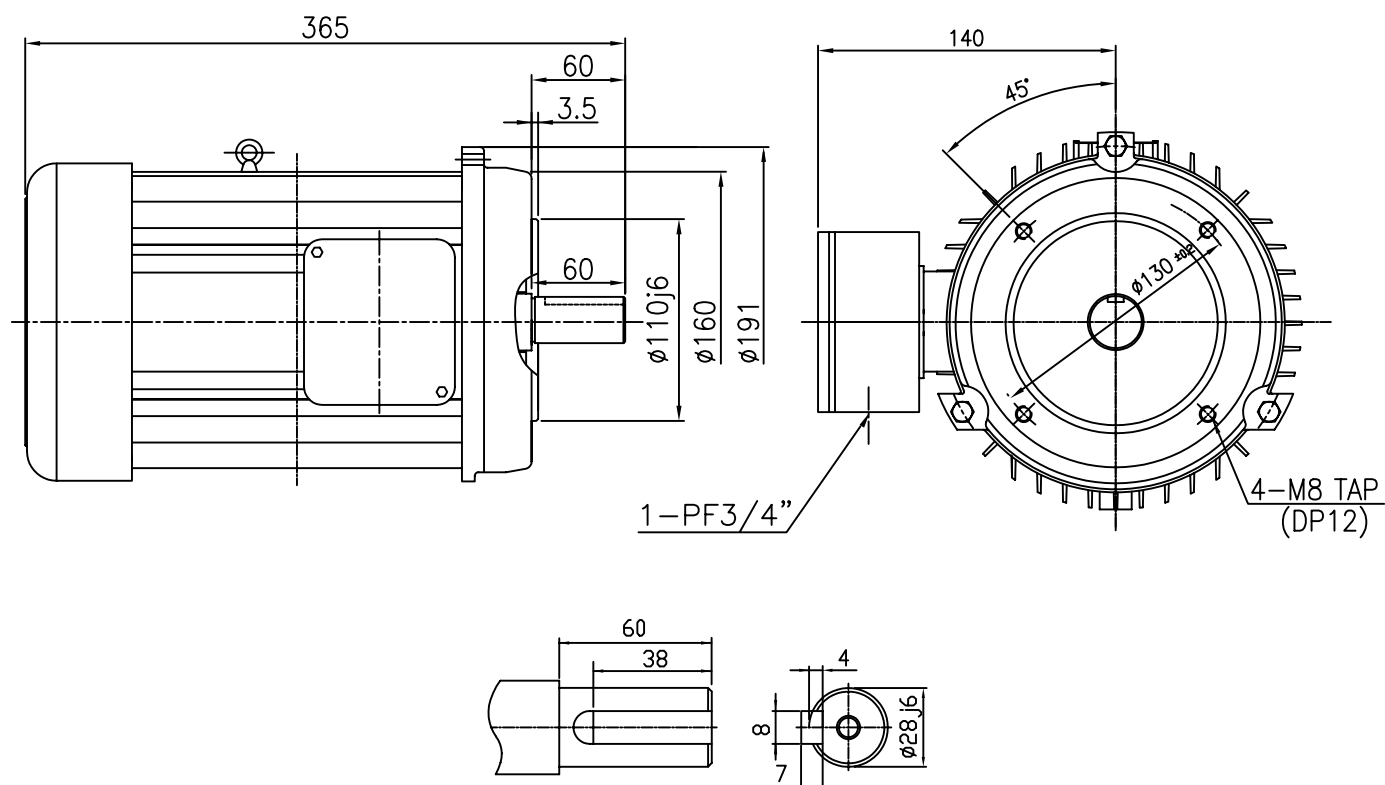


OUTLINE DIMENSION



SHAFT EXTENSION

<NOTE>

1. TYPE : TEFC(Totally Enclosed Fan Cooled)
FOOT MOUNTED TYPE
2. THE TOLERANCE FOR THE KEY DIMENSIONS
IS IN ACCORDANCE WITH KS B 1311-84
3. THE TERMINAL BOX MAY BE ROTATED
STEPS OF 90°

4. CAST IRON FRAME AND END BRACKETS.
5. STAINLESS STEEL NAME PLATE WITH
CONNECTION DIAGRAM.
6. STEEL FAN COVER AND CAST IRON
TERMINAL BOX

FRAME NO.	kW	POLE	BEARINGS	
			DRIVE	OPP.DRIVE
FF130	3.7	2	6206ZZ	6304ZZ

UNIT	mm	SCALE	$\frac{N}{S}$	PROJECT'N	3rd Angle	TITLE	OUTLINE
DESIGNED		CHECKED		APPROVED			
2009.03.11 H.Y. KIM		2009.03.11 J.H. JO		2009.03.11 H.J. KIM		SUBJECT	FF130
HIGEN Motor co., Ltd.						DWG. NO.	DW-A05HK3FDKB