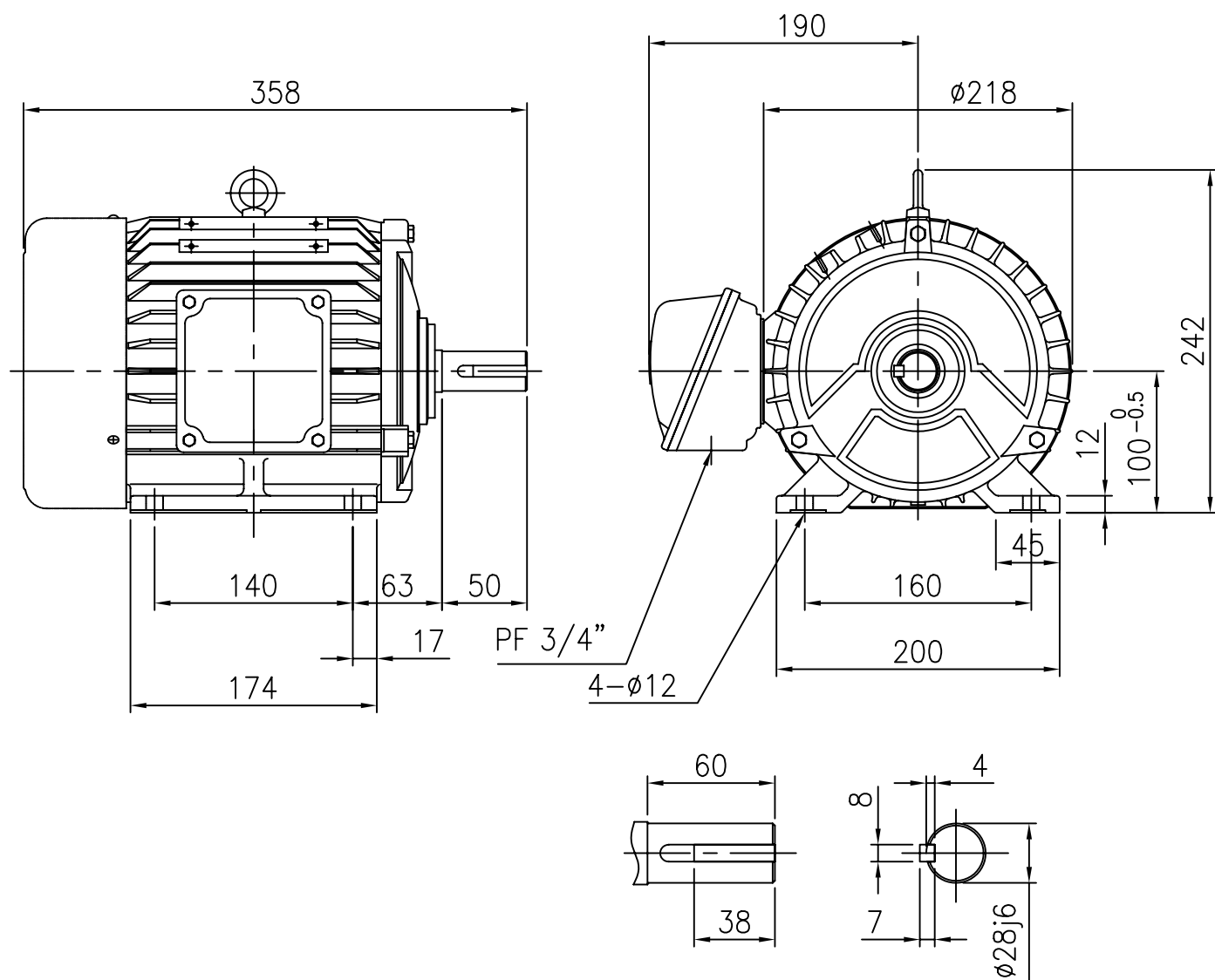


OUTLINE DIMENSION



<NOTE>

1. TYPE : TEFC(Totally Enclosed Fan Cooled)
FOOT MOUNTED TYPE
2. THE TOLERANCE FOR THE KEY DIMENSIONS
IS IN ACCORDANCE WITH KS B 1311-84
3. THE TERMINAL BOX MAY BE ROTATED
STEPS OF 90°

SHAFT EXTENSION

4. CAST IRON FRAME AND END BRACKETS.
5. STAINLESS STEEL NAME PLATE WITH
CONNECTION DIAGRAM.
6. STEEL FAN COVER AND CAST IRON TERMINAL BOX.

FRAME NO.	OUTPUT (kW)			BEARING NO.					
				2 P		4 P		6 P	
	2P	4P	6P	DRIVE	OPP.D.	DRIVE	OPP.D.	DRIVE	OPP.D.
100L	-	2.2	-	-	-	6206ZZ	6205ZZ	-	-

UNIT	mm	SCALE	$\frac{N}{S}$	PROJECT'N	3rd Angle	TITLE	OUTLINE
DESIGNED		CHECKED		APPROVED			
2009.01.30 H. Y. KIM		2009.01.30 J. H. JO		2009.01.30 H. J. KIM		SUBJECT	100L, B3
HIGEN Motor co., Ltd.						DWG. NO.	DW-100L-EFF